



Florida Transportation Plan

Update

FLORIDA
Transportation Plan



Your Florida. Your vision. Your plan.

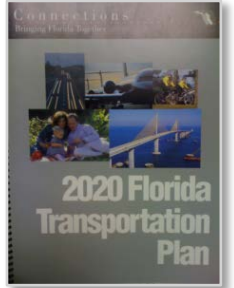
What is the Florida Transportation Plan?

- Florida's long-range transportation plan
- A plan for all of Florida
- Provides framework for transportation decisions and investments



Why Does the FTP Matter?

- Guides state, regional, and local transportation decisions and investments
- FTPs have advanced Florida
 - 2020 FTP (2000) – Strategic Intermodal System
 - 2025 FTP (2005) – Regional visioning and collaboration
 - 2060 FTP (2010) – Alignment with Florida Strategic Plan for Economic Development; Florida Mobility and Trade Plan
 - Current FTP (2015) – Resilience, Workforce, Choices



Elements of the Florida Transportation Plan



Vision Element

Trends, uncertainties, and themes that will shape the future of transportation in Florida (50 years)



Policy Element

Goals and objectives to guide the Florida Department of Transportation and partners toward the vision (25 years)



Implementation Element

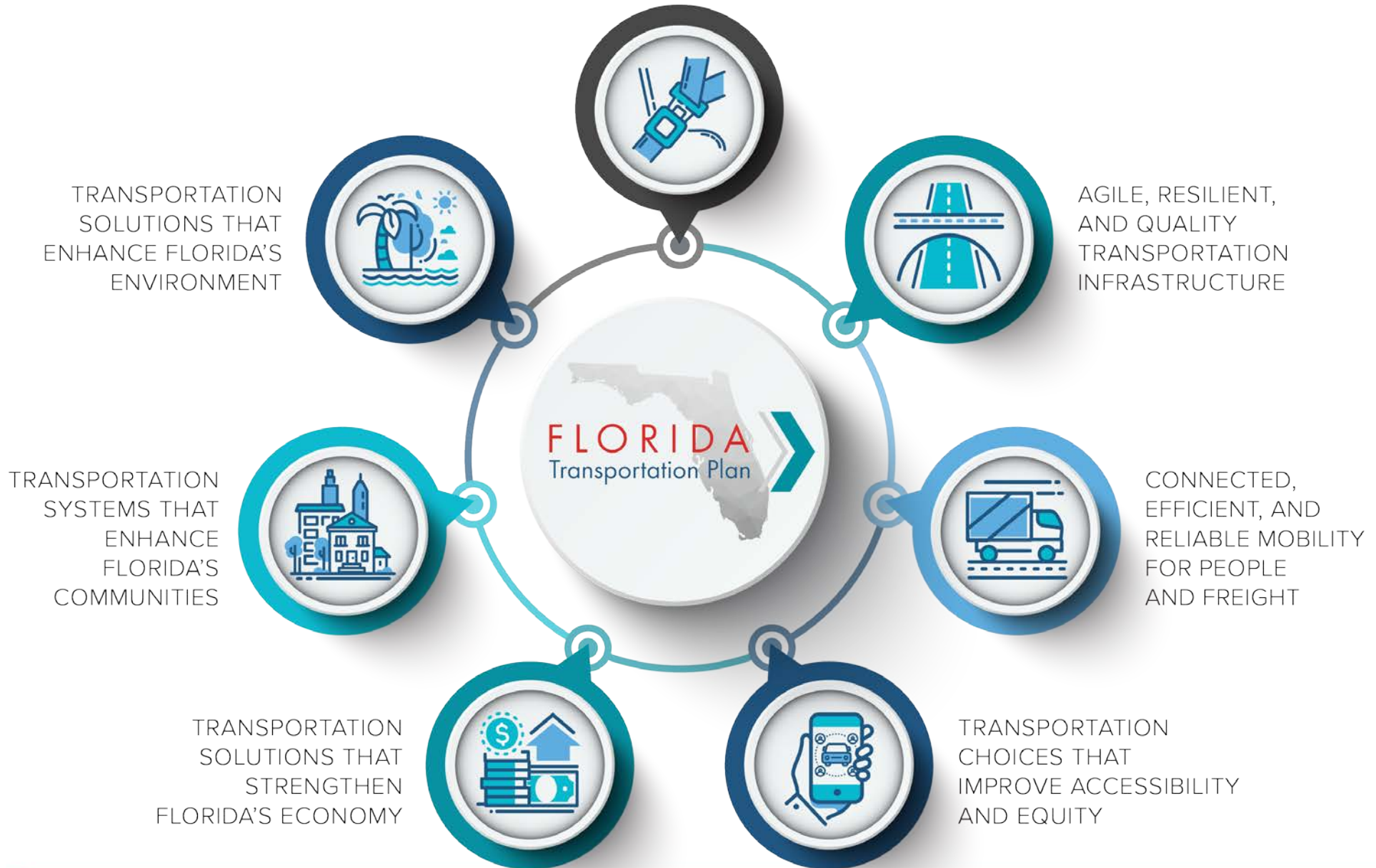
Emphasis areas with key actions (5-25 years)







Performance Element

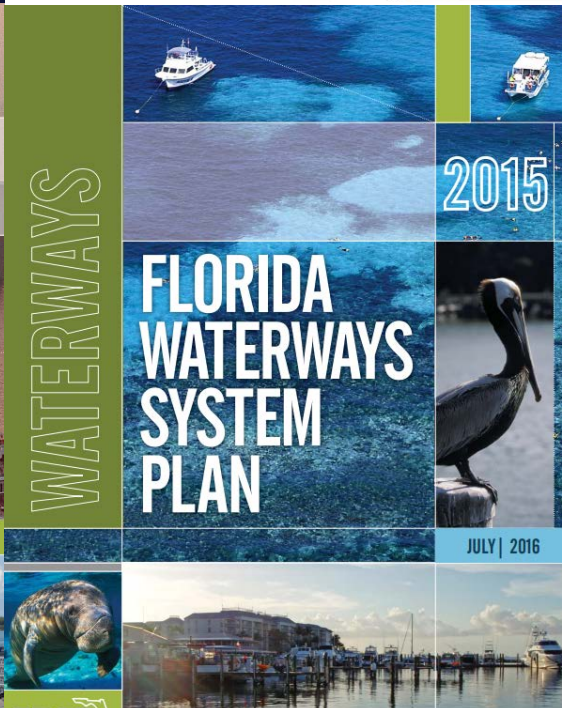
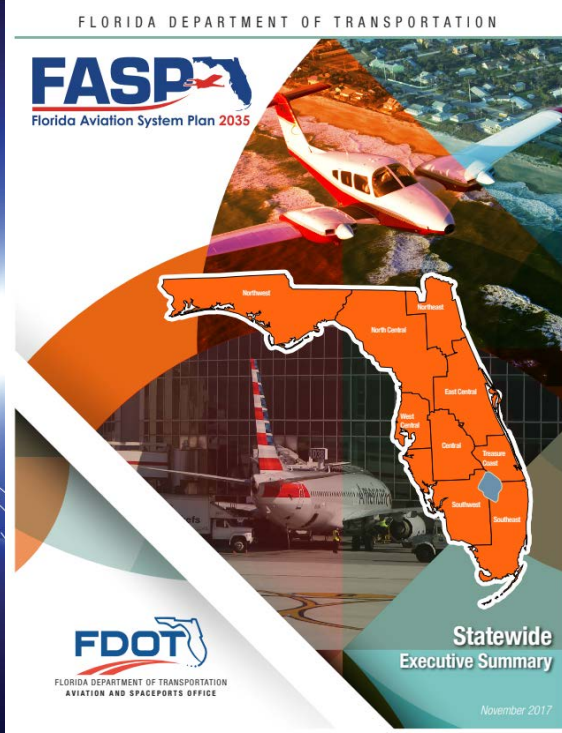
Performance of the system on key measures of safety, asset condition, and mobility (2-4 years)

SAFETY AND SECURITY FOR
RESIDENTS, VISITORS AND BUSINESSES



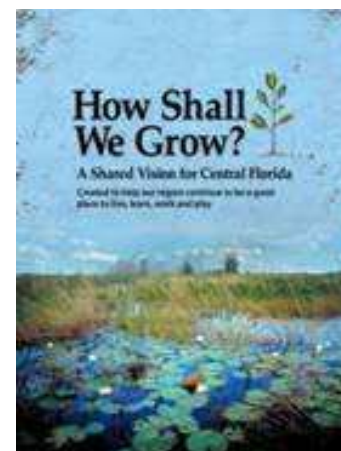
Cross-Cutting Topics

Technology	Resilience	State/Interregional	Regional/Local
<ul style="list-style-type: none"> • Automated, connected, electric, and shared vehicles • Transportation system management and operations • Big data • New materials and processes 	<ul style="list-style-type: none"> • Extreme weather • Emergency evacuation and response • Sea level rise • Flooding • Economic and societal changes 	<ul style="list-style-type: none"> • SIS, including modal facilities • Trade & logistics • Multi-use/multi-modal facilities • Global, statewide, and interregional connectivity • Florida's economic drivers and industries 	<ul style="list-style-type: none"> • Urbanized, non-urbanized, and rural • Congestion relief • Land use and community planning • Regional visions • Environment • Economic development
			



Related Partner Efforts

- Metropolitan Planning Organizations (MPOs)
 - Long Range Transportation Plans
- State Agency Plans/Initiatives
 - DEO, DEP, Enterprise Florida, Space Florida, etc.
- Local Governments
 - Comprehensive Plans, etc.
- Regional Planning Councils
 - Strategic Regional Policy Plans
- Modal Partners
 - Transit, expressway, seaport, airport and other authorities
- Regional and Community Visions





Values and Preferences Survey

Values and Preferences Survey Content

- Short (~10 min) online survey in English containing the following sections:
 - Frequency of using different modes
 - Satisfaction questions
 - Three most significant transportation challenges in the next 25 years
 - 10 MaxDiff questions on transportation improvement priorities (see example)
 - Respondents asked to select the most and least important option out of 5 statements for each question
 - Good at determining relative preferences since it requires respondents to trade-off priorities, rather than allowing them to rate all statements as important
 - Demographics

Example MaxDiff Trade-Off Question

MOST IMPORTANT (Select one)		LEAST IMPORTANT (Select one)
<input type="radio"/>	Consistent travel time to my daily destinations	<input type="radio"/>
<input type="radio"/>	Fewer traffic crashes	<input type="radio"/>
<input type="radio"/>	Fewer traffic delays while I am traveling to another area of Florida	<input type="radio"/>
<input type="radio"/>	Use of technology for traffic management, including smart phone apps and connected technology	<input type="radio"/>
<input type="radio"/>	Faster travel to my destination	<input type="radio"/>

(1 of 10)

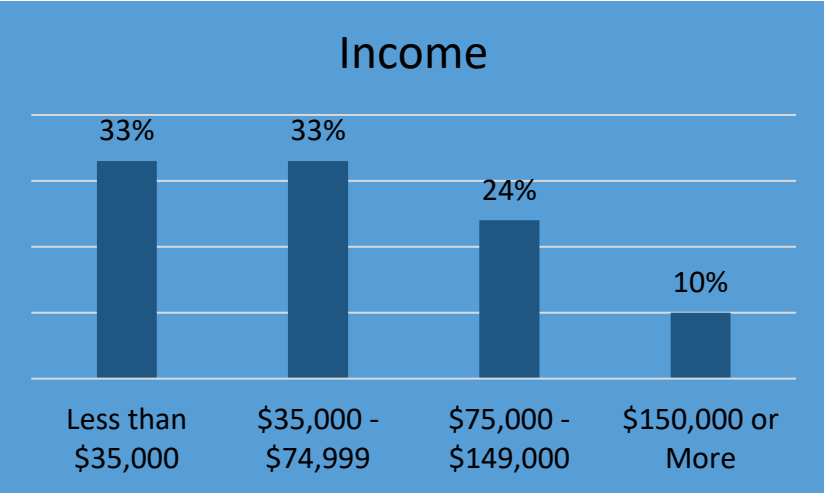
Survey Methodology

- Survey recruitment occurred between September 5, 2019 and May 1, 2020 via the following methods:
 - Survey link posted on FDOT's website
 - Survey invitations emailed to existing contact lists
 - Attendees approached during public meetings
- Sample was weighted to age and income within district, then weighted to district population
- Even so, final sample might not necessarily reflect larger Florida population because of non-random recruitment methods
- In total, 1,662 usable surveys were collected
 - Results from District 6 should be interpreted with caution because of small sample size

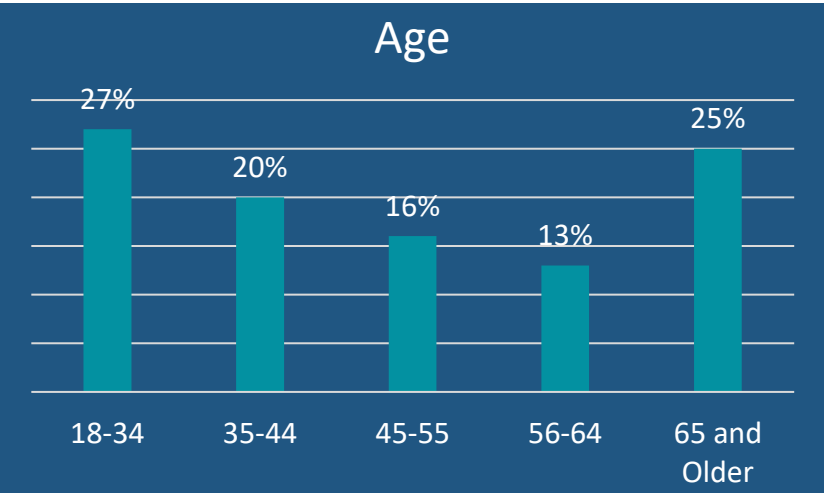
District	Completed Surveys (unweighted)
District 1	338
District 2	154
District 3	169
District 4	265
District 5	344
District 6	81
District 7	311
Total	1,662

Demographics and Characteristics of Sample

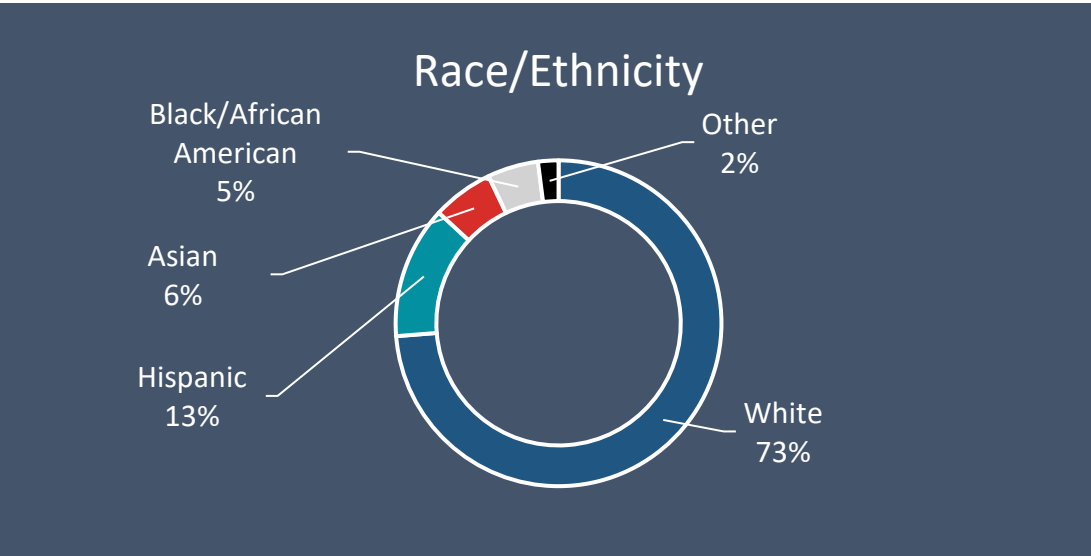
Income



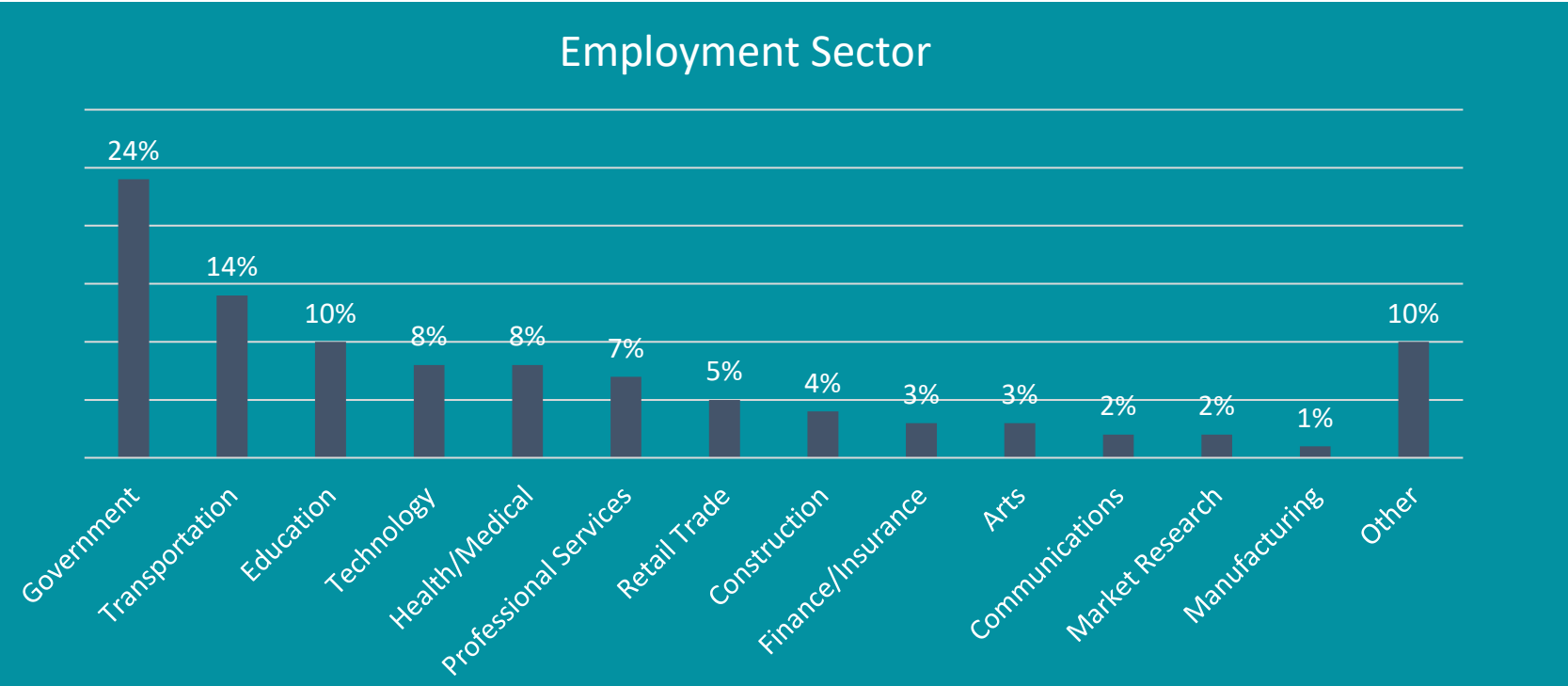
Age



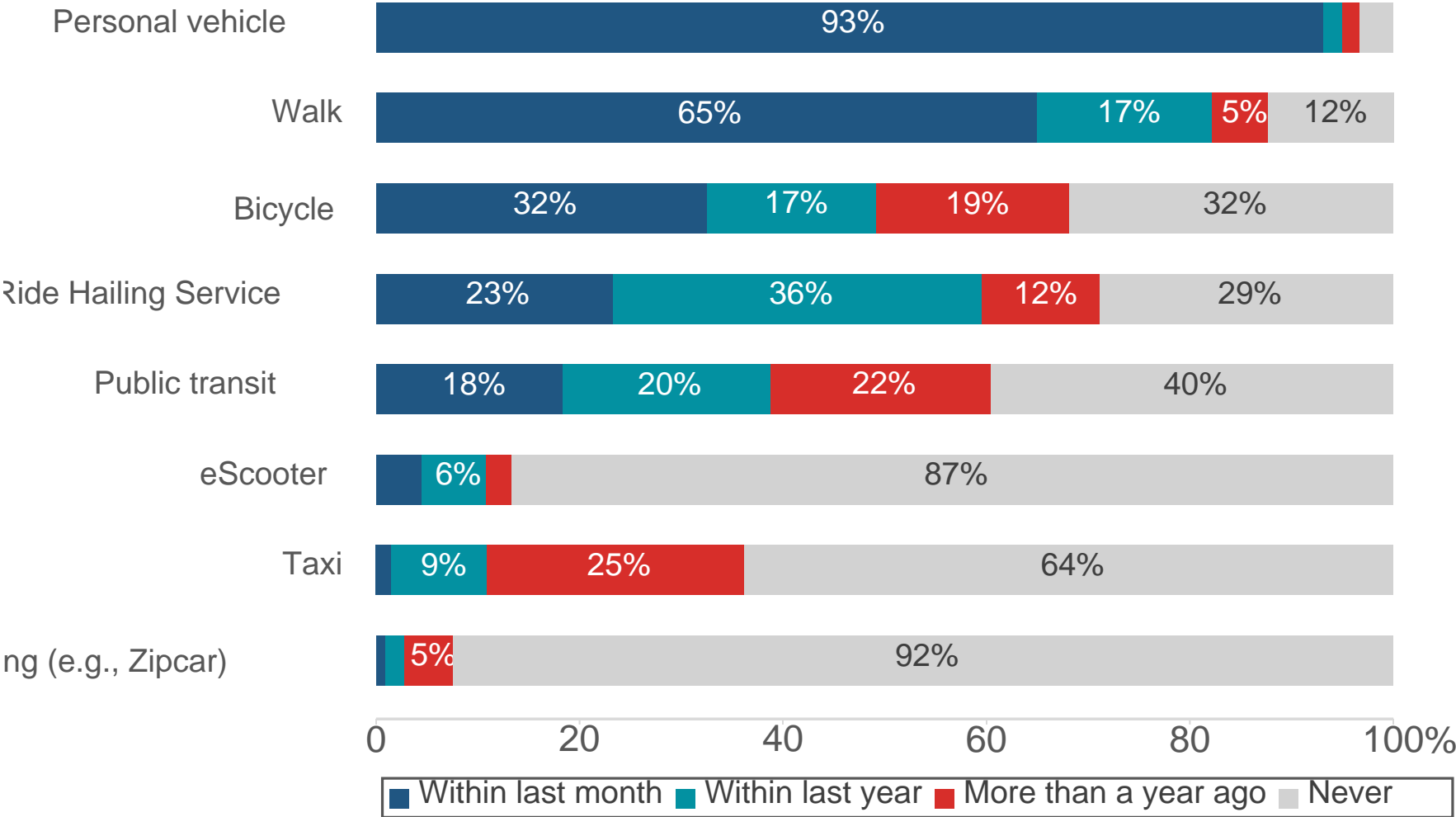
Race/Ethnicity



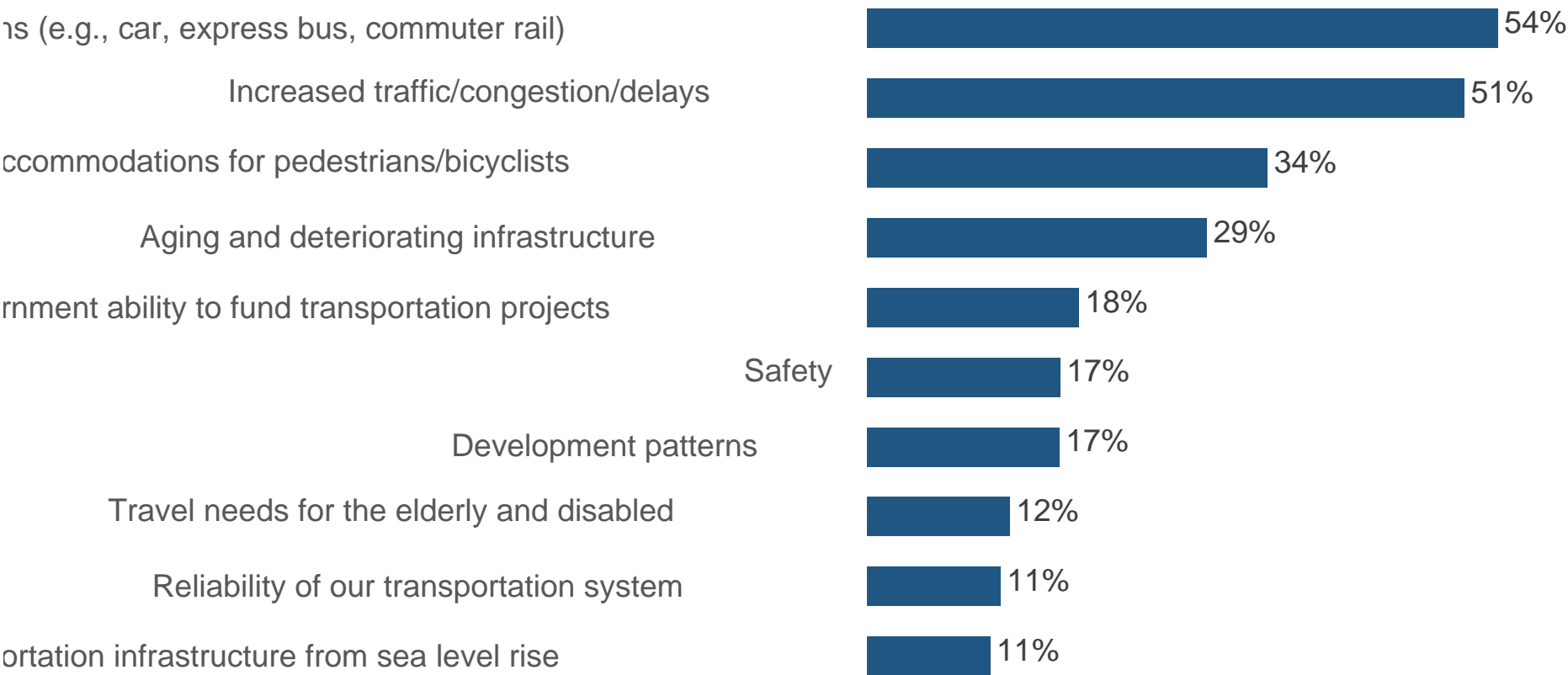
Employment Sector



Transportation Modes Used



10 Most Significant Transportation Challenges in The Next 25 Years



Note: Percentages do not add up to 100% because each respondent was asked to select 3 challenges. Only 10 most frequently named challenges are shown.

Values and Preferences – What We Heard

“Recognize the diversity of **communities** across the state.”

“Increase **accessibility** of transportation choices.”

“Florida residents and visitors need more **mobility** options”

“Consider **connectivity** between transportation hubs, especially airports and seaports.”

“Better planning for **communities** allows for better **resilience** and multimodal options for **sustainability**.”

A large teal chevron pointing right, with a smaller grey chevron behind it, both on the left side of the slide.

Regional and Local Trends

9 OUT OF **10**

FLORIDIANS

live in **URBAN AREAS**



TRANSPORTATION *is the*
THIRD HIGHEST

HOUSEHOLD COST *for a family of four in Florida*



6.9%

of Florida's households are

**LIMITED
ENGLISH
SPEAKING**



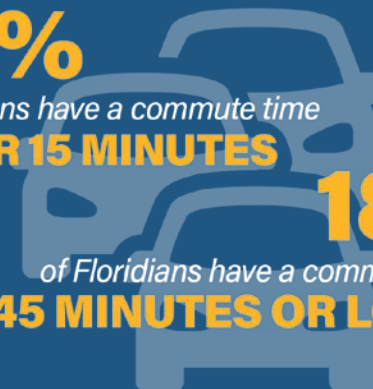
20%

of Floridians have a commute time

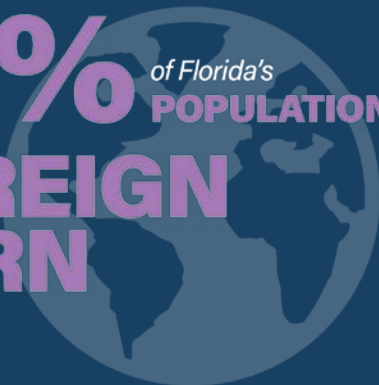
UNDER 15 MINUTES

18%

of Floridians have a commute time of
45 MINUTES OR LONGER



20% *of Florida's* **POPULATION**
is **FOREIGN
BORN**



6.5% *of households in Florida*
DO NOT OWN A VEHICLE

while another

40.2% *own only*
ONE VEHICLE

Florida's
65+ POPULATION
is projected to
GROW BY
60%
by 2045

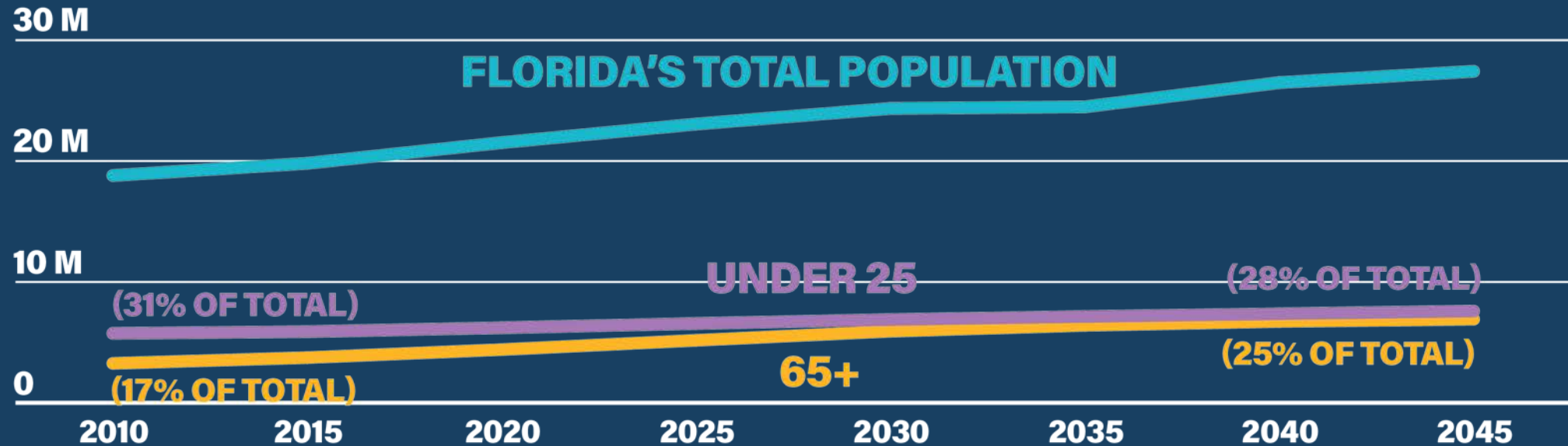


Nationally
67% OF AGING
ROAD USERS
are
OUTLIVING THEIR
ABILITY TO DRIVE
by an average of
7-10 YEARS

61% of Florida's
POPULATION GROWTH
between 2018 and 2045 is
projected to be concentrated in
10 COUNTIES



[Miami-Dade, Orange, Hillsborough, Broward,
Palm Beach, Lee, Duval, Polk, Osceola, & Manatee]





Florida Transportation Plan (FTP)

[Home](#) / [FTP Update](#) / [Cross-Cutting Topics](#)

Regional/Local



[< Cross-Cutting Topics](#)

TECHNOLOGY

Will technology change how and when we travel?

RESILIENCE

How do we prepare our transportation system for, and recover from, weather, environmental, economic, and operational disruptions?

STATE/INTERREGIONAL

How do we improve the state's most strategic transportation systems?

REGIONAL/LOCAL

What regional or local needs should we consider?

We want to hear from you! Below is information about regional and local trends and resources to enhance your understanding about why trends at the regional and local level matter in planning the future of transportation. We invite you to share your thoughts and ideas on these trends and how they will change transportation in the future using the red button below.

Why Regional and Local Trends Matter

With 21 million residents and growing, Florida is one of the most diverse states in the nation. Florida's 411 cities and towns and numerous incorporated areas offer a wide range of places to live, work, learn, and play. Nine out of 10 Florida residents live in urban areas, but most of the state's land area is rural in character. How do we meet the transportation needs of these diverse regions and communities?

- [FTP Regional and Local Kick-off Webinar Presentation](#) [coming soon]
- [FTP and Regional/Local Presentation](#) [coming soon]
- [Regional/Local trends handout](#) [coming soon]

What are Your Thoughts and Ideas on Regional and Local Trends? (click here)

Resources

Webinars:

- Eno Transportation: [Inclusive new mobility solutions for people with disabilities](#)
- Transportation Research and Education Center at Portland State University: [Aging in Place: Improving Mobility for Older Adults](#)
- Eno Transportation: [Mobility as a Service: How to Share and Play Nice](#)

Podcasts:

- American Planning Association: [Bike Sharing](#)
- Sidewalk Talk: [City of the Future, Mobility on Demand](#)

Webpage for Regional/ Local Campaign

What Will We Do With Your Input?



Input is received at meetings, online, through survey, etc.

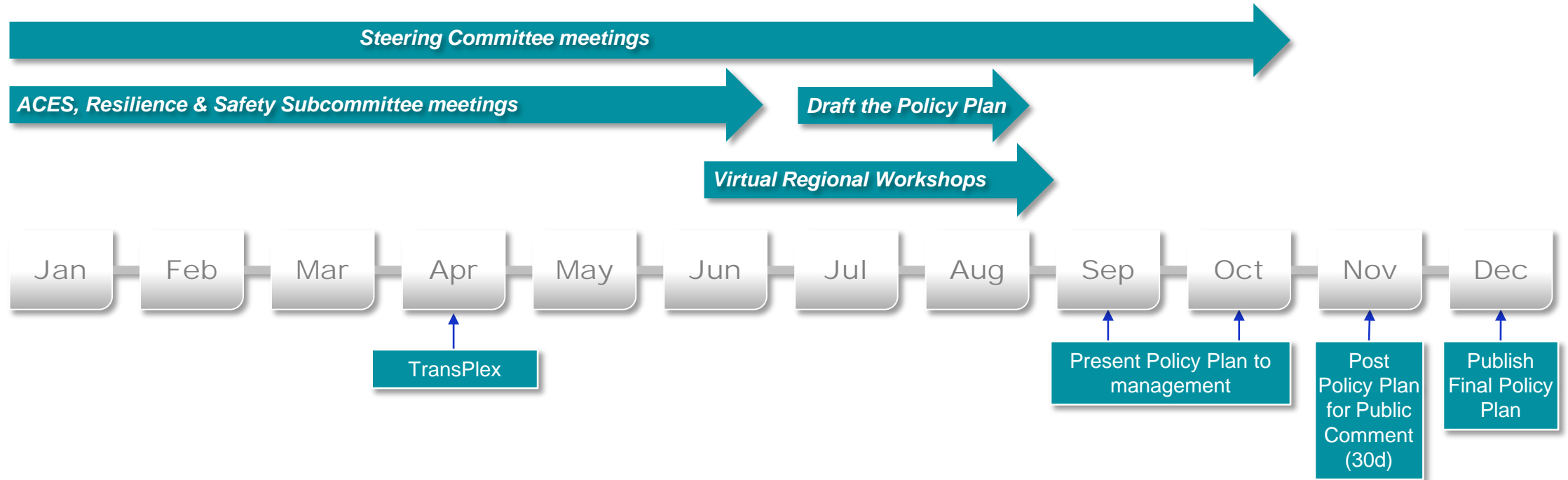


Provided to the FTP Steering Committee and Subcommittees for review and consideration



Your input is used to shape the plan

FTP Events, Meetings, and Campaigns



2020

Get Involved!

www.floridatransportationplan.com

- Respond to our [resilience, technology, state/interregional, and regional/local](#) surveys.
- Join us at an [FTP event](#).
- Become an [ACES, Resilience](#), and/or [Safety](#) subcommittee friend.
- Request a [presentation](#) from FDOT.
- Provide [general feedback](#).



Florida Transportation Plan (FTP)

Home /
Summary



FTP Overview

FTP Update

Steering Committee
ACES Subcommittee
Resilience Subcommittee
Safety Subcommittee
Cross-Cutting Topics
Technology
Resilience
State/Interregional
Regional/Local
Long Range
Visioning Session

Get Involved

Share Your
Thoughts & Ideas
Join Us at an
FTP Event
Become a
Subcommittee Friend
Request a Presentation
from FDOT
General Feedback
Comment Form

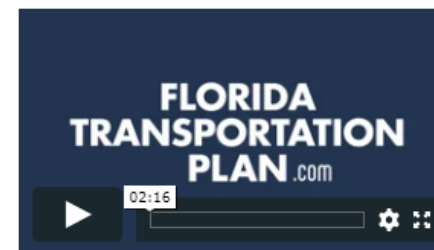
FTP Implementation

Florida Transportation Plan Overview

The Florida Transportation Plan (FTP) is the state's long-range plan guiding Florida's transportation future. The FTP is a plan for all of Florida – and affects every resident, business, and visitor.

The FTP is important because it not only sets a long-range vision for the future, but it guides transportation decisions today. It considers how we will:

- Attain our goal of zero fatalities on Florida's transportation system.
- Provide a more efficient and mobile transportation system.
- Meet the needs of a growing and changing population.
- Make our economy more competitive.
- Enhance the quality of life and environment of Florida's communities.
- Increase opportunities for access to transit and other modes of transportation.
- Address emerging issues such as the rapid changes in technology.



The Florida Department of Transportation (FDOT) and its partners are updating the FTP, and we want you to [get involved](#).

We have concluded our Values and Preferences Survey. Thank you to all who participated and provided your input! We will use this valuable data to outline and draft the next FTP.

Visit
<http://www.floridatransportationplan.com/share.htm>
to provide your thoughts and ideas

